

MATERIAL SOLUTIONS FOR INDUSTRIAL MAINTENANCE



1.800.321.9300
WWW.ASSOCIATEDSTEEL.COM
INQUIRY@ASSOCIATEDSTEEL.COM



HIGH STRENGTH, MACHINABLE ALLOY & CARBON STEELS

KROMITE® #3 HRHT (4140/4150 MOD)

HIGH STRENGTH, PREHARD, ALLOY

Features

Clean Steel Technology
Electric Furnace Melt
Vacuum Degassed
Fine Grain Structure
Heat Treated
Machine Straightened
Stress Relieved
Free of Hard & Soft Spots

Available Sizes

Squares

1/2" to 4"

Flats

1/4" x 1" to 2" x 5"

Rounds¹

1/2" to 16"

Heavy Hollow Sections²

3" OD x 1-1/2" ID up to
6" OD x 3-1/2" ID

¹Bar stock 10" round and over is typically furnished rough turned and oversized to finish to the nominal size.

²Rough stock both on the OD & ID dimension; other sizes offered.

Typical Properties*

Hardness - 269/341 BHN
Tensile - 156,000 PSI
Yield - 123,500 PSI
Elongation in 2" - 17%
Reduction of Area - 55%

*Based on 1/2" test piece

Lengths

10/13 Ft R/L
20/26 Ft R/L
and Custom Cuts



(equivalent to Sheffield™ #10)

Consider **Kromite® #3** in place of other hot rolled, alloy and carbon steels including: AISI 4140, 4150, 4340, 1018, 1020 and 1045 depending upon the requirement.

KROMITE® COLD DRAWN

(4140 MOD), COLD FINISHED, ANNEALED ALLOY

Features

Clean Steel Technology
Fine Grain Structure
Machine Straightened
Fatigue Resistant
Machinable

Typical Properties*

Hardness - 180/235 BHN
Tensile - 114,000 PSI
Yield - 100,500 PSI
Elongation in 2" - 24%
Machinability - Approx. 70%

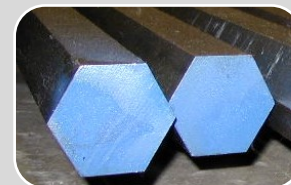
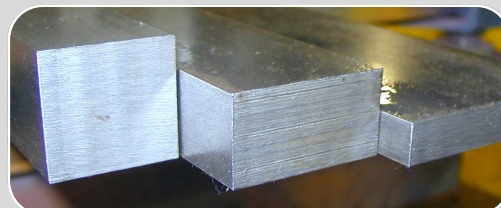
*Based on 1/2" test piece

Available Sizes

Hexagons - 3/16" to 4"
Squares - 3/8" to 4"
Flats - 1/4" x 1" to 2" x 6"
Metric Options Available

Lengths

10/13 Ft R/L, 20/26 Ft R/L
and Custom Cuts



(equivalent to Sheffield™ Cold Drawn)

Consider in place of other cold finished, alloy and carbon steels including: AISI 4140, 1018, 1045 and 1060.

REDI-RAIL® CUSTOM HARDENED, PRECISION FINISHED, WEAR COMPONENTS

Engineered for applications including: transfer and conveyor rails, guides, machine ways, beef rails, heavy-duty tracks as well as various OEM parts. Even after further heat treatment is applied, wear resistant properties far exceed that of "cold roll" steels. Hardness range from Rockwell "C" 55/62 or tempered down to 38/42 depending upon application; results based on decarb removal.

Available Sizes

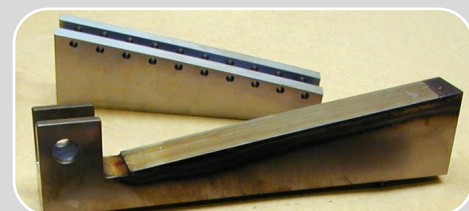
Squares - 3/8" to 4"
Flats - 1/4" x 1" to 2" x 6"
Metric Options Available

Lengths

10/13 Ft R/L, 20/26 Ft R/L
and Custom Cuts

Special Stock (Beef & Pork Rails)

1/2" x 2-1/2", 1/2" x 3" and
5/8" x 3" with Round & Square
Hardened Edges - 20/26 Ft R/L



(equivalent to Kromite® CD60)

For over 40 years, **Redi-Rail®** has been a time-tested and field-proven product.

Our metals are manufactured utilizing clean steel technology and strict process controls to ensure the highest level of quality.

MIRRALLOY® TGP (4140/4150 MOD), TURNED GROUND & POLISHED, ALLOY SHAFT

Features

Heat Treated
Turned, Ground & Polished
Machine Straightened
Stress Relieved
Clean Steel Technology
Electric Furnace Melt
Vacuum Degassed
Fine Grain Structure
Weldable

Typical Properties*

Hardness - 269/341 BHN
Tensile - 156,000 PSI
Yield - 123,500 PSI
Elongation in 2" - 17%
Reduction of Area - 55%
*Based on 1/2" test piece

Available Sizes

Rounds - 1/4" to 8"
Metrics - 4MM to 100MM

Lengths

10/12 Ft R/L
20/24 Ft R/L
and Custom Cuts



(equivalent to Sheffield™ #20)

Mirralloy® TGP is a FATIGUE RESISTANT alloy shaft that can be used for a variety of maintenance applications. It is more dependable and tougher than commercial grade steels like AISI 1018, 1045, 4140 and 4150.

MIRRALLOY® FM TGP (1144 MOD), FREE MACHINING, TGP SHAFT

Features

Free Machining
Precision TGP Finish
Machine Straightened
Fatigue Resistant
Clean Steel Technology

Typical Properties*

Hardness - 260 BHN
Tensile - 133,000 PSI
Yield - 110,000 PSI
Elongation in 2" - 8% min.
Machinability - 83% of 1212
*Based on 1/2" test piece

Available Sizes

Rounds - 1/4" to 4"

Lengths

10/12 Ft R/L
20/24 Ft R/L
and Custom Cuts



(equivalent to Sheffield™ #20 FM)

MIRRALLOY® FM PRE-KEYED FREE MACHINING, KEYED TGP SHAFT

Features

Pre-Keyed Full Length
Free Machining
Precision TGP Finish
Machine Straightened
Fatigue Resistant
Clean Steel Technology

Typical Properties*

Hardness - 260 BHN
Tensile - 133,000 PSI
Yield - 110,000 PSI
Elongation in 2" - 8% min.
Machinability - 83% of 1212
*Based on 1/2" test piece

Available Sizes

Rounds - 1/2" up to 2-15/16"
Other Sizes & Metrics Available

Lengths

10/12 Ft R/L
and Custom Cuts



(equivalent to Sheffield™ FM Redi-Key)

Comparison of Mirralloy® FM vs Commercial Grade Carbon Steels*

	Mirralloy® FM	1045	1018
Tensile Strength	133,000 PSI	91,000 PSI	70,000 PSI
Yield Strength	110,000 PSI	77,000 PSI	50,000 PSI

*Based on 1/2" test piece

Contact Us For Keystock Requirements

HIGH PERFORMANCE, CORROSION RESISTANT STAINLESS

MIR 50® STAINLESS PRECIPITATION HARDENED, NON-GALLING, PSQ STAINLESS

Features

High Strength
Galling Resistant
Corrosion Resistant
Fatigue Resistant
Double Stress Relieved
Resists Shock
Machinable
Weldable
Sour Service Approved

Agency Concurrence

NACE MR0175-97
AMS-5763 (chemistry)
FDA and API-6A

Typical Properties*

Hardness - 258/294 BHN
Tensile - 140,000 PSI
Yield - 108,000 PSI
Elongation in 2" - 26%
Reduction of Area - 65%
Charpy "V" Notch - 105 @ 70°F

*Based on 1/2" test piece

Service Temperature

800°F (constant); Oxidation
Resistant To 1200°F

Available Sizes¹

PSQ TGP - 1/4" to 6-1/2"
RTOS - 3/4" to 10"

¹Certain sizes may have modified analysis relative to production requirements.

Lengths

10/12 Ft R/L
20/24 Ft R/L
and Custom Cuts



(equivalent to Nass 45®)

Mir 50® can replace other grades of stainless such as: 304L, 316L, 410, 416, 17-4PH and 15-5PH depending upon the application. It will accept additional hardening up to Rockwell "C" 36/44. Contact office for details.

MIR 50® BUSHING STOCK CORROSION RESISTANT STAINLESS STEEL

Features

High Strength
Galling Resistant
Corrosion Resistant
Fatigue Resistant
Double Stress Relieved
Low Memory
Machinable
Weldable
Sour Service Approved

Agency Concurrence

NACE MR0175-97
AMS-5763 (chemistry)
FDA and API-6A

Typical Properties*

Hardness - 258/294 BHN
Tensile - 140,000 PSI
Yield - 108,000 PSI
Elongation in 2" - 26%
Reduction of Area - 65%
Charpy "V" Notch - 105 @ 70°F

*Based on 1/2" test piece

Service Temperature

800°F (constant); Oxidation
Resistant To 1200°F

Available Sizes¹

2-1/2" OD x 1" ID up
to 6-1/2" OD x 3" ID
Other Sizes Available

¹Certain sizes may have modified analysis relative to production requirements.

Lengths

Custom Cuts



Supplied rough machined with allowance for clean-up.

Mir 50® is well-known as the "4340 of the stainless world". It offers excellent serviceability in the pulp & paper, petrochemical, energy, wastewater and food processing industries.

CENCOR™ STAINLESS (316/316L) PRECISION-FINISH, TGP STAINLESS SHAFT

Features

Corrosion Resistant
Precision TGP Finish
Tight Tolerances
Scaling Resistant
Machinable

Agency Concurrence

NACE MR0175-09

Typical Properties*

Hardness - 186 BHN
Tensile - 82,000 PSI
Yield - 33,000 PSI
Elongation in 2" - 35%
Reduction of Area - 45%

*Based on 1/2" test piece

Service Temperature

1400°F (max limit)

Available Sizes

Rounds - 1/8" to 4-1/2"
Metrics - 4MM to 50MM

Lengths

10/13 Ft R/L
and Custom Cuts



(equivalent to Sheffield™ Stainless)

Our field-proven stainless steels are engineered to provide optimal service life and performance in a host of maintenance applications.

ASC2250® LDX LEAN DUPLEX, HIGH STRENGTH, BEARING-FIT, STAINLESS SHAFT

Features

Stress Corrosion Cracking (SCC) Resistance
Excellent Pitting Resistance (PRE26)
Corrosion Fatigue Resistance
Bearing-Fit, Turned Ground & Polished Finish
Machinable and Weldable
Service Temperature Up To 750°F
Improved Strength Over 304L & 316L Stainless
Sour Service Approved

Agency Concurrence

National Sanitation Foundation approval for drinking water applications (NSF Section 61).

USDA approval for dairy processing applications (3-A Format for Sanitary and

Typical Properties*

Hardness - 290 BHN max
Tensile - 94,000 PSI min
Yield - 65,000 PSI min
Elongation in 4D - 35%
Reduction of Area - 72%

*Based on 2" test piece

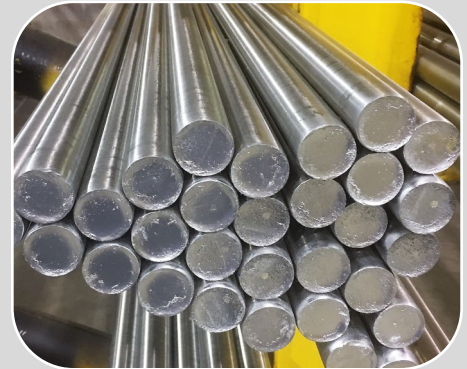
Available Sizes

Bearing-Fit TGP Rounds - 1/2" to 6"
Rough Turned, Oversize Rounds - 3/4" to 6"
Metric Bearing-Fit Rounds - 20MM to 100MM

Lengths

10/13 Ft R/L, 20/26 Ft R/L and Custom Cuts

Contact Us For Thin Gage Duplex Stainless Sheets



(equivalent to Sheffield™ MDSS)

Typical Chemical Analysis

CR	MN	P	N	SI	NI	C	MO	CU
22.0	5.0	.04	.21	1.0	1.6	.04 max	.60 max	.1/.8

Meets the following specifications: UNS S32101, ASTM A276 and A479, EN 1.4162.

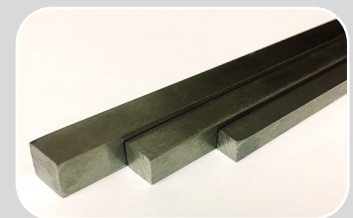
ASC2250® LDX is a 2101 Duplex stainless steel that exhibits equal parts Austenite and Ferrite. It combines high chromium, nitrogen and molybdenum to enhance the corrosion resistance and toughness of the steel.

AQUA-KEY® HIGH STRENGTH, CORROSION RESISTANT STAINLESS KEYSTOCK

A premium stainless steel product designed to provide a high level of reliability for maintenance applications in corrosive environments.

Available Sizes

Squares and Rectangles
(Contact Office For Details)



ASSOCIATED STEEL is proud to serve the following heavy industrial marketplaces with our high performance, corrosion resistant stainless steel products.



Energy



Pulp & Paper



Food Process



Chemical



Wastewater



Mining



Steel & Iron

ABRASION RESISTANT, HIGH IMPACT WEAR PRODUCTS

RHINO-TUF® EZ AR400 ABRASION RESISTANT, "THRU-HARDENED" WEAR PLATE

Features

Abrasion Resistant
Thru-Hardened
Weldable
Formable
Ease of Machining
Low Carbon Equivalency

Typical Properties

Hardness - 385/425 BHN
Elongation in 2" - 15%
Reduction of Area - 60%
Grain Type - Tempered Martensite
Carbon Equivalency (CE) - 47

Available Sizes

Plates - 1/8" to 4"

Sheet Sizes

48" x 96", 48" x 144",
48" x 288", 96" x 144",
96" x 288"
and Custom Cuts



(equivalent to Sheffield™ 45XL)

Rhino-Tuf® EZ is engineered to replace most other commercial grade abrasion resistant plate products, not limited to: HSLA, T-1, A36, AR360, AR400 and A514.

RHINO-TUF® EZ STRIPS ABRASION RESISTANT, AR400 WEAR BARS & STRIPS

Features

Abrasion Resistant
Thru-Hardened
Weldable
Formable
Ease of Machining
Low Carbon Equivalency

Typical Properties

Hardness - 385/425 BHN
Elongation in 2" - 15%
Reduction of Area - 60%
Grain Type - Tempered Martensite
Carbon Equivalency (CE) - 47

Available Sizes*

Strips - 1/8" to 1" Thick
Widths - 3/4" to 4"
and Custom Cuts

Lengths

10/12 Ft R/L
20/24 Ft R/L
and Custom Cuts

*Offered as hot rolled bars (mill edged), oxy-cut, and/or high-definition plasma cut depending upon size and thickness.



ONE OF THE LARGEST WEAR BAR INVENTORIES IN NORTH AMERICA.

ULTIMA™ 501 AR500 (MOD), ABRASION RESISTANT, "THRU-HARDENED" WEAR PLATE

Features

Abrasion Resistant
Quench & Tempered
Thru-Hardened
Inclusion Shape Control

Typical Properties

Hardness - 475/535 BHN
Elongation in 2" - 15%
Reduction of Area - 41%
Grain Type - Tempered Martensite
Carbon Equivalency (CE) - 54

Available Sizes

Plates - 1/4" to 3"

Sheet Sizes

48" x 96", 48" x 144",
48" x 288", 96" x 144",
96" x 288"
and Custom Cuts



(equivalent to Supra™ HT)

Rhino-Tuf® EZ and Ultima™ 501 are engineered to perform where a good balance of impact, toughness and abrasion resistance are required. Cutting and Fabrication services offered.

Typical Applications For Rhino-Tuf® EZ and Ultima™ 501

- Chain Conveyors
- Crusher Plates
- Hammers
- Levelers
- Cutting Edges
- Wear Guides
- Truck Bed Liners
- Chipper Blades
- Wear Rings
- Screens
- Fan Blades
- Bucket Liners
- Baler Plates
- Mixer Components
- Coal Chutes
- Impact Pads
- Hoppers
- Screw Flights
- Teeth Caps
- Grouser Bars
- Shakeout Decks

Abrasion resistant steels are typically sold to hardness ranges, not fixed chemistries. Wear plates are designed for liner applications; they are not intended for self-supporting structures or lifting devices. Proper precautions should be adhered to when working with and/or fabricating AR plate.

Our wear resistant materials are manufactured to rigid industry standards to meet your most demanding requirements.

ULTIMA™ 601 AR600 ABRASION RESISTANT, HARDENED I.D. WEAR PIPE

Features

Excellent Hardness
Superior Abrasion Resistance
Adaptable To Various Configurations
Up To 6X More Life Than Mild Steel

Available Sizes

3" SCH 40 to 8" SCH 40
6" SCH 80 to 14" SCH 80
10" XH to 20" XH
Custom T's, Y's, Elbows,
Reducers, Flanges and
Couplings Available

Lengths

10 Ft R/L
20 Ft R/L
Custom Cuts

Typical Properties

I.D. Hardness - 600 BHN
O.D. Hardness - 250 BHN approx. The I.D. hardness tapers to a ductile outer surface.

Ultima™ 601 is designed to extend service life where abrasive materials (i.e. glass, coke, coal, wood chips, fly ash, sand, cement, rice and stone) can cause pre-mature wear. Welding and Cutting precautions required.



(equivalent to Tuf-Pipe™ 600)

RHINO-KLAD™ CHROMIUM CARBIDE OVERLAY CLAD PLATE AND CUSTOM SHAPES

Features

Superior Abrasion Resistance
Moderate Impact Resistance
Fair Corrosion Resistance

Typical Properties

Developed Hardness - Rc "60/62"
(Contact office for all inquiries.)

Available Sizes

Standard Nominal Thickness - 3/8" to 1"
Carbide Overlay Thickness - 1/8" to 3/8" (Single or Double Overlays)

Rhino-Klad™ provides excellent service in extreme abrasion and moderate impact applications including cyclones, blades, chutes, classifiers and mixers. The process offers a chromium carbide overlay that is bonded to a base carbon steel plate.



(equivalent to Redi-Clad™)

WORKWEAR™ 14 11-14% (HADFIELD) MANGANESE IMPACT STEEL

Features

Excellent Hardness Results
Hardens Under Load and Impact
True Hadfield Grade

Typical Properties*

Hardness - 250 BHN (as delivered)
*Material work hardens up to 550 BHN depending upon the application.

Available Stock

Plates, Rounds, Flats, Squares and Angles
(Contact office for all inquiries.)



(equivalent to Sheffield™ 14% Manganese)

OTHER SPECIALTY MAINTENANCE MATERIALS

KROMITE® THREADED BAR

HEAT TREATED, ROLL THREADED ROD

Features

Heat Treated
High Strength - Alloy Material
Rolled Threads vs Cut Threads
Excellent Toughness
Creep Resistant
Consistent Grain Structure
High Degree of Accuracy
Precision Class 2A & 2G Fit

Agency Concurrence

ASTM A193, Grade B7

Lengths

10/12 Ft R/L
and Custom Cuts

Typical Properties*

Hardness - 321 BHN
Tensile - 155,000 PSI
Yield - 135,000 PSI
Grain Size - 7
Elongation in 2" - 19%
Reduction of Area - 53%

*Based on 1/2" test piece

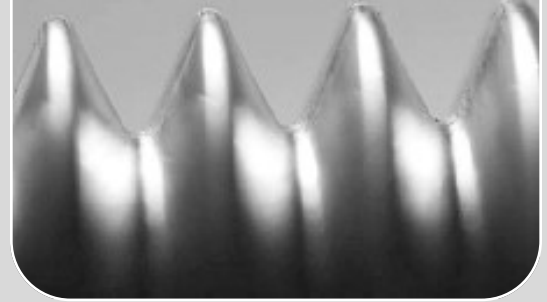
Available Sizes

National Fine - 1/4" (28) to 2" (12)
National Coarse - 1/4" (20) to 2-1/2" (4-1/2)
Eight Pitch - 1" (8) to 2-1/8" (8)
Acme - 3/8" (12) to 2-1/2" (4)
Right Hand, Left Hand & 2-Start
Metrics - 4MM (.7) to 39MM (4.0)

The strength of our threaded bar is in the rolling process. Thread rolling deforms the blank material as it is forced along the contour of the die. The worked material is strain hardened, resulting in a product stronger and harder with minimal risk of fatigue failure relative to cut threads.

*Consider **Kromite® Threaded Bar** as a suitable upgrade where maintenance applications require improved strength, durability, creep resistance and overall performance.*

KROMITE THREADED BAR



Grain structure is maintained in continuous unbroken lines, increasing tensile and shear strength.

COMMERCIAL THREADED BAR



Sharp cuts and gouges, weaken threads and can serve as stress risers.

(equivalent to Sheffield™ Stud Stock)

KROMITE® ECONO-FINISH

PRE-HARD, 28/34 RC, DECARB-FREE, PLATE

Features

Heat Treated
High Strength
4140/4142 (Mod.) Alloy
Furnished 269/341 BHN
Decarb-Free
Machinable

Lengths

10/12 Ft R/L
and Custom Cuts

Surface Condition*

Ground Top & Bottom (+.015"/+.035" oversize)
Saw Cut Width & Length (+1/8" oversize)

*As Delivered (Pre-Machined Condition)

Available Stock

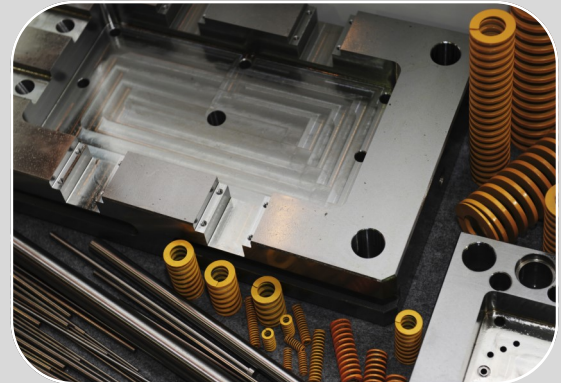
Squares and Flats
(Contact office for all inquiries.)

Also available in the Annealed Condition.

This pre-hardened, **pre-machined** product will reduce material preparation time and allow you to get your finished parts into service quicker and extend service life.

All of the decarb (from the heat treating process) has been removed. This "decarb-free" surface finish will accept maximum surface hardening for maximum wear resistance. The PLUS TOLERANCE is provided to minimize machining at your job site.

Consider this product for dies, molds, support tooling, and various fixtures. Please inquire with your "finished" dimensions.



(equivalent to Sheffield™ Redi-Finish)

OTHER TOOL & DIE STEELS

Molox® #7 (O-1)	Oil Hardening Tool Steel
Molox® #8 (A-2)	Air Hardening Die Steel
Molox® #13 (H-13)	Hot Working Tool Steel
Krome Die™ (D-2)	Air Hardening Die Steel
Lusco™ #7 (S-7)	Shock Resistant Tool Steel

*Precision Finish, Decarb-Free, Close Tolerance
Drill Rod & Flat Ground Stock Available (all grades)*

MIRRO-KROME 60® (I.H.C.P.)

INDUCTION HARDENED, CHROME PLATED SHAFT

Features

Induction Hardened
Chrome Plated
Abrasion Resistance
Corrosion Resistance
Polished Finish
Fatigue Resistance

Typical Properties*

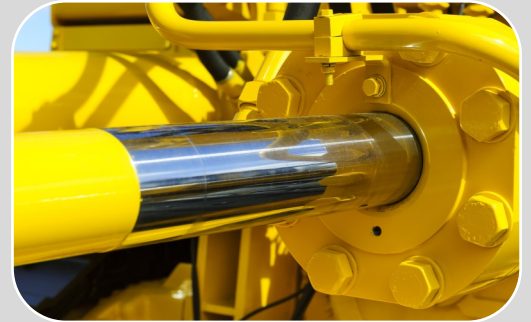
Case Hardness - Rc "50" min
Depth of Plating - .001"/side
Yield - 100,000 PSI approx.
Elongation in 2" - 10%
Reduction of Area - 38%
Finish - 12/15 RMS
*Based on 1/2" test piece

Available Sizes

Rounds - 1/2" to 6"
Metrics - 12MM to 100MM (other sizes may be available)

Lengths

10/12 Ft, 20/24 Ft R/L
and Custom Cuts



(equivalent to Sheffield™ Redi-Case)

Certain smaller sizes may have modified analysis and (.0005") chrome thickness per side.

MIRRALOY® HCP (C.P.O.)

HARD CHROME PLATED SHAFT

Features

Chrome Plated
Abrasion Resistance
Corrosion Resistance
Polished Finish

Typical Properties*

Chrome Hardness - Rc "58/60"
Depth of Plating - .001"/side
Yield - 100,000 PSI approx.
Elongation in 2" - 10%
Reduction of Area - 38%
Finish - 12/15 RMS
*Based on 1/2" test piece

Available Sizes

Rounds - 1/2" up to 4"
Metrics - 12MM up to 100MM (other sizes may be available)

Lengths

10/12 Ft, 20/24 Ft R/L
and Custom Cuts



(equivalent to Sheffield™ Redi-Chrome)

Certain smaller sizes may have modified analysis and (.0005") chrome thickness per side.

Mirro-Krome 60® and Mirraloy® HCP are engineered for use in pneumatic and hydraulic piston rods, as well as, dowel and guide pins commonly seen in the agricultural and construction industries. Proper consideration should be given for material choice dependent upon specific requirements and/or in-house machining capabilities.

MIRRO-MAX 60® INDUCTION HARDENED, BEARING-FIT, LINEAR SHAFT

Features

Hardened Case
Wear Resistant
Machine Straightened
Precision Finish
Bearing-Fit Tolerances
Chamfered Ends

Available Sizes

Rounds - 1/4" up to 4"
Metrics - 8MM up to 50MM

Lengths

Custom (Job Dependent)



(equivalent to Sheffield™ #65)

Mirro-Max 60® is ideal for bearing, linear shafting and guides, shaft supports and hardened roller applications that require tight diameter and straightness tolerances. This product is not chrome plated. Contact our offices for additional details.

METRIC SIZED METALS

ALLOY

Heat Treated, TGP (4140/4150 mod) Shafting - **MIRRALLOY®**

Available Sizes

7MM - 100MM Rounds

Typical Tensile Strength

156,000 PSI

STAINLESS STEEL

Precision Fit, TGP (316/316L) Shafting - **CENCOR™**

Available Sizes

4MM - 50MM Rounds

Typical Tensile Strength

82,000 PSI

Bearing-Fit, TGP Lean Duplex Shafting - **ASC2250® LDX**

Available Sizes

20MM - 100MM Rounds

Typical Tensile Strength

94,000 PSI

THREADED ROD

Heat Treated, Roll Threaded (B7) - **KROMITE® THREADED BAR**

Available Sizes

M6 - 1.0 up to M30 - 3.5

Specification

ASTM A193, Grade B7 & Class 2A fit

CHROME SHAFTS

Induction Hardened, Chrome Plated - **MIRRO-KROME 60®**

Available Sizes

12MM - 80MM Rounds

Surface Case Hardness

Rockwell "C" 50 min.

Hard Chrome Plated Shafting - **MIRRALLOY® HCP**

Available Sizes

10MM - 70MM Rounds

Chrome Hardness

Rockwell "C" 58/60

LINEAR SHAFTING

Induction Hardened, Bearing-Fit - **MIRRO-MAX 60®**

Available Sizes

8MM up to 50MM Rounds

Hardened Case

Rockwell "C" 60/65

English / Metric Conversions

Inches (in)	X 25.4	Millimeters (mm)
Millimeters (mm)	X .04	Inches (in)
Feet (ft)	X .304	Meters (m)
Meters (m)	X .33	Feet (ft)
Pounds (lbs)	X .453	Kilograms
Kilograms (kg)	X 2.2	Pounds (lbs)



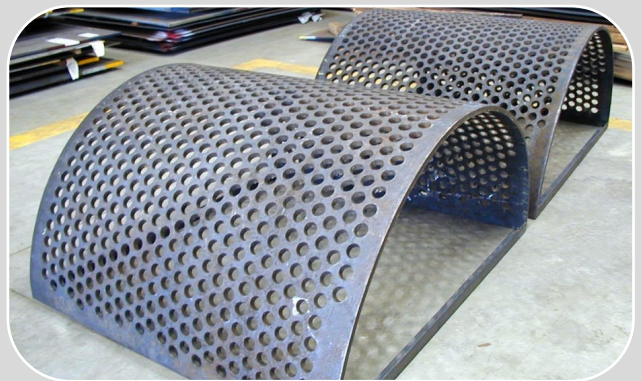
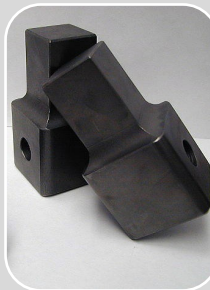
Contact our office for all of your requirements on other sizes, grades and configurations of metric materials that are not shown.

VALUE-ADDED SERVICES (MACHINING & FABRICATION)

For over 80 years, Associated Steel Corporation has been providing value-added services that include machining, fabrication and technical assistance. Our experienced team routinely handles difficult maintenance problems through our Special Service Division (SSD). We can provide a complete O.E.M. replacement component that is ready for immediate installation to minimize ones downtime. In certain instances, quotes can be generated from worn or new parts. (restrictions apply)

AVAILABLE PROCESSES

- Plasma Cutting
- Polishing
- Facing-To-Length
- Flame Hardening
- Tapping
- Welding
- Broaching
- Saw Cutting
- Chamfering
- Turning-On-Centers
- Straightening
- Planning
- Grinding
- Milling
- Counter-Boring
- Counter-Sinking
- Shape Cutting
- Heat Treating
- Forming
- Shearing
- Drilling



Associated Steel Corporation is the sole licensed agent for all trademark products mentioned within. All content and images provided are for general sales and marketing; they are not to be utilized for engineering purposes. All properties listed are typical or approximate values, are subject to modification, and for information purposes only. ©2020 Associated Steel Corporation. All Rights Reserved.



**18200 MILES AVENUE
CLEVELAND, OHIO 44128**

**PHONE: 1.800.321.9300
WWW.ASSOCIATEDSTEEL.COM
INQUIRY@ASSOCIATEDSTEEL.COM**