

KROMITE® THREADED BARS

Heat Treated, Roll Threaded, High Strength Alloy

Kromite Threaded Bar is made of heat treated, high strength, alloy material. Designed for bolts and studs; it is the ideal product to be used when strength and toughness are key requirements.

Kromite Threaded Bars are manufactured with a rolled thread vs. a cut thread. This product is virtually free of tears, chatter marks and tool marks that are commonly associated with cut threads. Such imperfections in cut threads are points of stress that cause fatigue failure in service.

Key Features

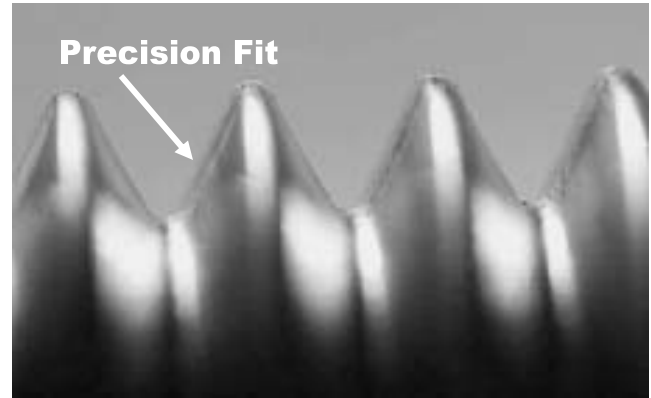
- **Forged Bar Tough** – Uniform grain refinement through strain hardening.
- **Resistant To Creep** – stronger, harder threads significantly reduce the likelihood of stretching of threads.
- **Resistant To Fatigue Failure** – smoother, hardened threads; less knicks and gouges; the initiation points of fatigue failure.
- **Excellent Grain Structure** – defined into continuous, unbroken lines; the grain follows the thread contour similar to a forged bar.
- **Excellent Surface Finish** – smooth surface offers significant improvement in performance.
- **Alloy Material** – in many cases, mild or carbon steel is used which does not offer strength or long life. **Kromite Threaded Bar** is only made from heat treated, high strength alloy; it provides the strength and toughness needed to resist fatigue and increased service life. Our material conforms to specifications for: **ASTM A193, Grade B7.**

Typical Mechanical Properties*

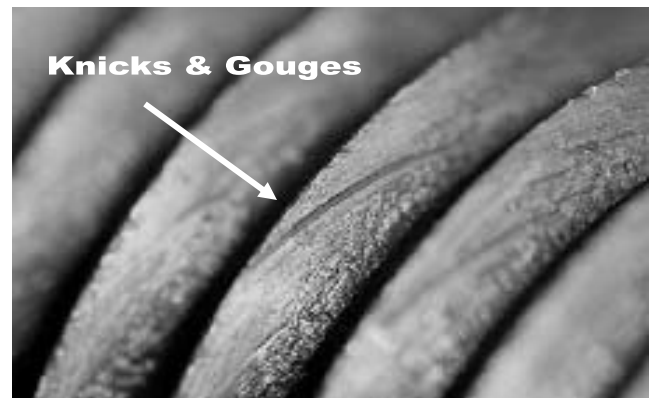
Brinell Hardness	321 BHN
Tensile Strength	155,000 P.S.I.
Yield Strength	135,000 P.S.I.
Grain Size	7
Elongation	19%
Reduction of Area	53%

*Based on 1/2" Diameter Test Specimen

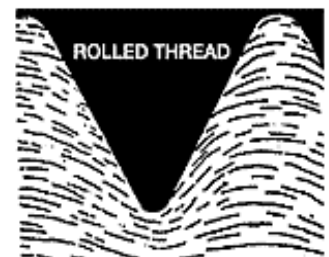
Kromite “Roll Threaded” Bars



Commercial Grade “Cut Threads”



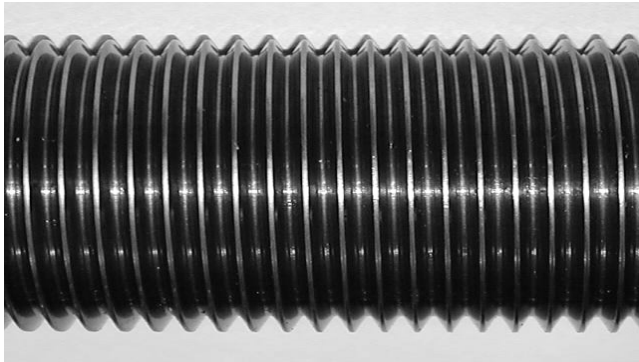
Sharp cuts, with nicks and gouges, weaken threads and can serve as a focal point for stress risers, which will lead to fatigue failures.



Grain structure is maintained in continuous unbroken lines, following contours and increasing tensile and shear strength.

KROMITE® THREADED BARS

Heat Treated, Roll Threaded, High Strength Alloy



Surface Finish

Kromite Threaded Bars are smoother and have less surface imperfections that may cause possible failure in severe service applications. Thread rolling dies impart smooth burnished roots and flanks to threads. Rolled threads are free from tears or tool marks typically found in cut threads. Those surface imperfections contribute to fatigue failure, and may lead to catastrophic failure.

Strength of Rolled Threads

The secret to the strength of our **Kromite Threaded Bar** is in the rolling process. Thread rolling deforms the blank material as it is forced along the contour of the die. The worked material is strain hardened, resulting in a product stronger and harder with a defined grain structure. Cut threads encourage fatigue related failure.

Kromite Threaded Bars should be considered as a suitable upgrade where maintenance applications require improved strength and durability. In high torque and high stress applications, **Kromite Threaded Bars** significantly exceed the expected service life of other threaded products

- STRONGER THREADS
- UNIFORM HARDNESS
- HIGH STRENGTH
- BETTER FIT
- LONGER SERVICE LIFE

Available Sizes

National Fine Threads

1/4" (28)	9/16" (18)	1-1/8" (12)
5/16" (24)	5/8" (18)	1-1/4" (12)
3/8" (24)	3/4" (16)	1-3/8" (12)
7/16" (20)	7/8" (14)	1-1/2" (12)
1/2" (20)	1" (12, 14)	2" (12)

National Coarse Threads

1/4" (20)	9/16" (12)	1-1/8" (7)	2" (4-1/2)
5/16" (18)	5/8" (11)	1-1/4" (7)	2-1/4" (4-1/2)
3/8" (16)	3/4" (10)	1-3/8" (6)	2-1/2" (4-1/2)
7/16" (14)	7/8" (9)	1-1/2" (6)	
1/2" (13)	1" (8)	1-3/4" (5)	

Eight Pitch Threads

1" (8)	1-1/2" (8)	2" (8)
1-1/8" (8)	1-5/8" (8)	2-1/8" (8)
1-1/4" (8)	1-3/4" (8)	
1-3/8" (7)	1-7/8" (8)	

Acme Threads

3/8" (12)	1-1/4" (5, 4)
1/2" (10)	1-1/2" (4, 5)
5/8" (8, 6)	1-3/4" (4, 5)
3/4" (6, 8)	2" (4)
7/8" (6)	2-1/2" (4)
1" (4, 5, 6, 8)	

Inquire on all trapezoidal threaded bars and multi-lead threaded bars.

Metric Threads

4MM (.7)	20MM (2.50)
5MM (.8)	22MM (2.50)
6MM (1.00)	24MM (3.00)
8MM (1.25)	27MM (3.00)
10MM (1.50)	30MM (3.50)
12MM (1.75)	33MM (3.50)
14MM (2.00)	36MM (4.00)
16MM (2.00)	39MM (4.00)
18MM (2.50)	

Available Lengths

10/12 Ft Random Lengths

Custom Lengths (contact office for details)