

## **KROMITE® THREADED BAR**



**HIGH STRENGTH, HEAT TREATED, ALL THREAD**  
**KROMITE THREADED BAR** is made of heat treated, high strength, alloy material. Material conforms to specifications: **ASTM A193, Grade B7** and **Class 2A** fit.

**KROMITE THREADED BAR** should be considered as a suitable upgrade where maintenance applications require improved strength and durability. Should significantly exceed the expected service life of other threaded products which are manufactured as cut threads and using carbon steel, not alloy material.

### **STRENGTH OF ROLLED THREADS**

Thread rolling cold works the blank material as it is forced along the contour of the die, strain-hardening the product to be stronger and harder with a defined grain structure; where as, commercial cut threads encourage fatigue related failure.

### **KEY FEATURES**

**Forged Bar Tough** - uniform grain refinement through strain hardening.

**Creep Resistant** - stronger, harder threads significantly reduce the likelihood of stretching of threads.

**Fatigue Resistant** - smoother, hardened threads (stress risers); less knicks and gouges the initiation points of fatigue failure.

**Excellent Surface Finish** - smooth surface offers improvement in accuracy and overall performance.

### **TYPICAL MECHANICAL PROPERTIES\***

Hardness, Brinell	321 BHN
Tensile Strength	155,000 PSI
Yield Strength	135,000 PSI
Elongation in 2"	19%
Reduction of Area	53%
Grain Size	7

\*Based on 1/2" Test Specimen

### **INDUSTRIES TYPICALLY SERVED**

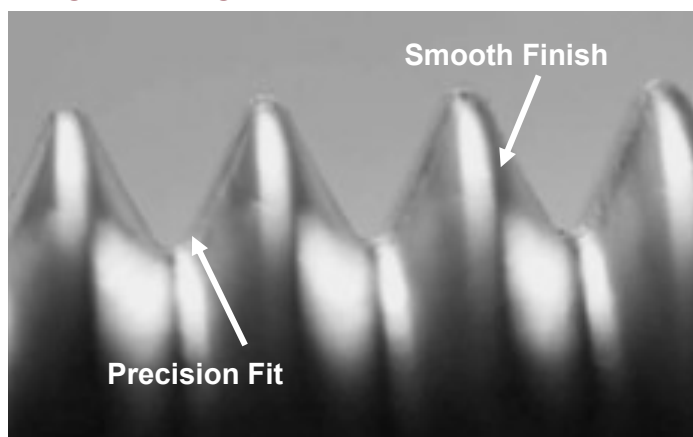
- Pulp & Paper
- Chemical
- Oil & Gas
- Energy
- Steel & Iron
- Automotive
- Construction
- Heavy Equipment
- Mining
- Agriculture

### **AVAILABLE INVENTORY**

- National Fine
- Acme
- National Coarse
- Metric
- Eight Pitch Series
- Trapezoidal (Call For Details)

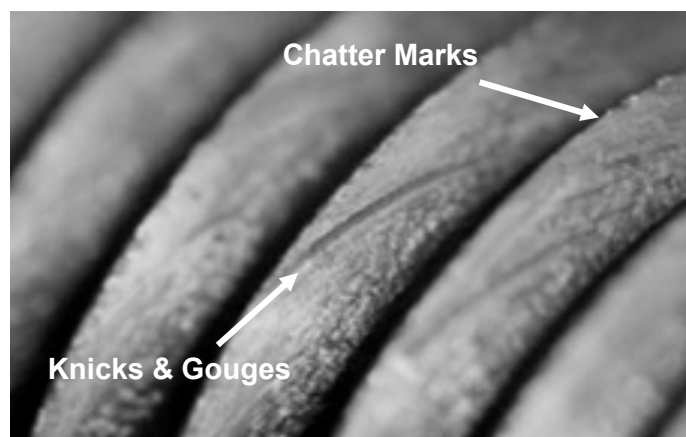
**HIGH PERFORMANCE**  
**UNYIELDING QUALITY**  
**EXTENDED SERVICE LIFE**

## KROMITE "ROLL THREADED" BAR



Grain structure is re-defined into continuous unbroken lines. The grain follows the thread contour, similar to a forged bar. The above macro photograph illustrates the quality of the threads. Smooth contours are free of the knicks and gouges that contribute to failure caused by fatigue.

## COMMERCIAL "CUT THREADED" BAR



Sharp cuts, with knicks and gouges, weaken threads are stress risers, which will lead to surface initiated fatigue failures. The above macro photograph clearly shows chatter marks and other imperfections.

## AVAILABLE INVENTORY\*

### National Fine

1/4" (28)	9/16" (18)	1-1/8" (12)
5/16" (24)	5/8" (18)	1-1/4" (12)
3/8" (24)	3/4" (16)	1-3/8" (12)
7/16" (20)	7/8" (14)	1-1/2" (12)
1/2" (20)	1" (12, 14)	2" (12)

### National Coarse

1/4" (20)	5/8" (11)	1-3/8" (6)
5/16" (18)	3/4" (10)	1-1/2" (6)
3/8" (16)	7/8" (9)	1-3/4" (5)
7/16" (14)	1" (8)	2" (4-1/2)
1/2" (13)	1-1/8" (7)	2-1/4" (4-1/2)
9/16" (12)	1-1/4" (7)	2-1/2" (4)

\*Bars offered in 10/12 Foot Random Lengths;  
Courtesy Cut In Half For UPS / FedEx Orders

\*Special Pitch Bolts, Double End Studs, Left Hand Threads, Double or Triple Leads, Hex Threads, Trapezoidal Threads and Stainless Steel Grade Options Available Upon Request

### Metric

4MM (.7)	12MM (1.75)	22MM (2.50)	36MM (4.00)
5MM (.8)	14MM (2.00)	24MM (3.00)	39MM (4.00)
6MM (1.00)	16MM (2.00)	27MM (3.00)	
8MM (1.25)	18MM (2.50)	30MM (3.50)	
10MM (1.50)	20MM (2.50)	33MM (3.50)	

### Acme

3/8" (12)	7/8" (6)	1-3/4" (4, 5)
1/2" (10)	1" (4, 5, 8)	2" (4)
5/8" (6, 8)	1-1/4" (4, 5)	2-1/4" (4)
3/4" (6, 8)	1-1/2" (4, 5)	2-1/2" (4)

### Eight Pitch Series

1" (8)	1-1/4" (8)	1-1/2" (8)	1-3/4" (8)	2" (8)
1-1/8" (8)	1-3/8" (8)	1-5/8" (8)	1-7/8" (8)	2-1/2" (8)



**PHONE: 800.321.9300**  
**EMAIL: MAIL@ASSOCIATEDSTEEL.COM**  
**WEB: WWW.ASSOCIATEDSTEEL.COM**